

Bernard Shaw Foster Court Estate

Meet our designers: Archio

Welcome

Welcome to our Meet the Designers session for the proposed new homes at Bernard Shaw Foster Court Estate.

At today's session, you can:



Meet Archio, the lead architects for the proposed new homes at Bernard Shaw Foster Court Estate



See examples of Archio's work on similar projects in London



Ask questions and share comments with the design team



View our updated timeline and next steps for the project

About the proposals

Camden Council and our new design team are about to begin work to design new homes for social and affordable rent on the estate. We will work with your community to take feedback on board and understand how this project could benefit Bernard Shaw Foster Court Estate.



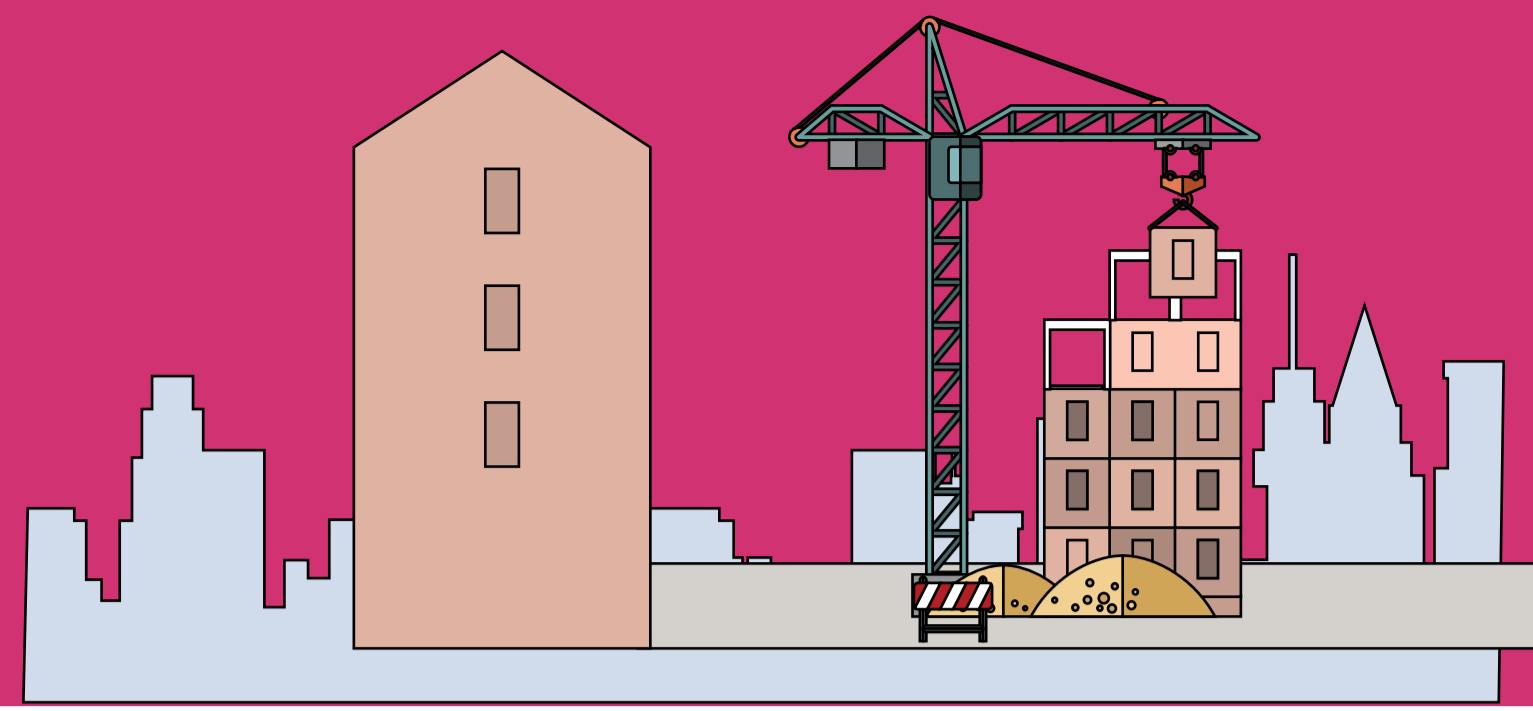
Area next to Bernard Shaw



Area next to Royal College Street and Foster Court



Aerial view of Bernard Shaw Foster Court Estate



Bernard Shaw Foster Court Estate

The story so far

Working with you

Since 2022, we have been speaking with local residents to understand how you feel about the Bernard Shaw Foster Court Estate, and get to know your concerns and priorities.

Now that we have our design team, they will be able to think about your feedback as part of the design process.

Through speaking with you, we have heard you would like:



Secure storage and facilities for residents



The estate to be more safe and secure for residents



Improved play spaces and green spaces on the estate



Designs that are sensitive to the street and the estate

Aims for the proposals

Before we start on designs, we are working to define the aims and objectives for this project. So far, we are aiming to:



Build new affordable homes on the estate with designs that are sensitive to existing homes



Work closely with residents to understand their needs and respond to them throughout the design process



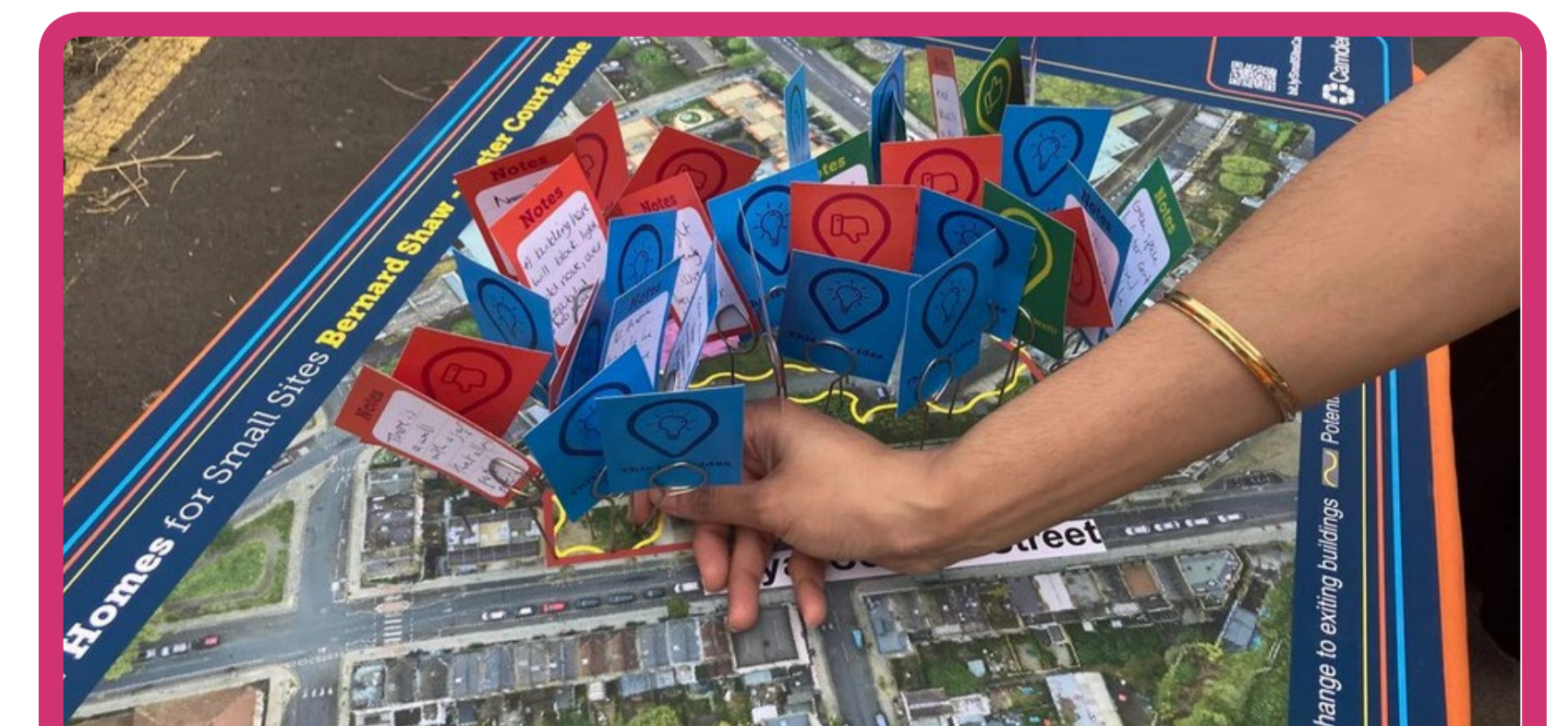
Make improvements to public parts of the estate, including shared outdoor areas, as informed by your feedback



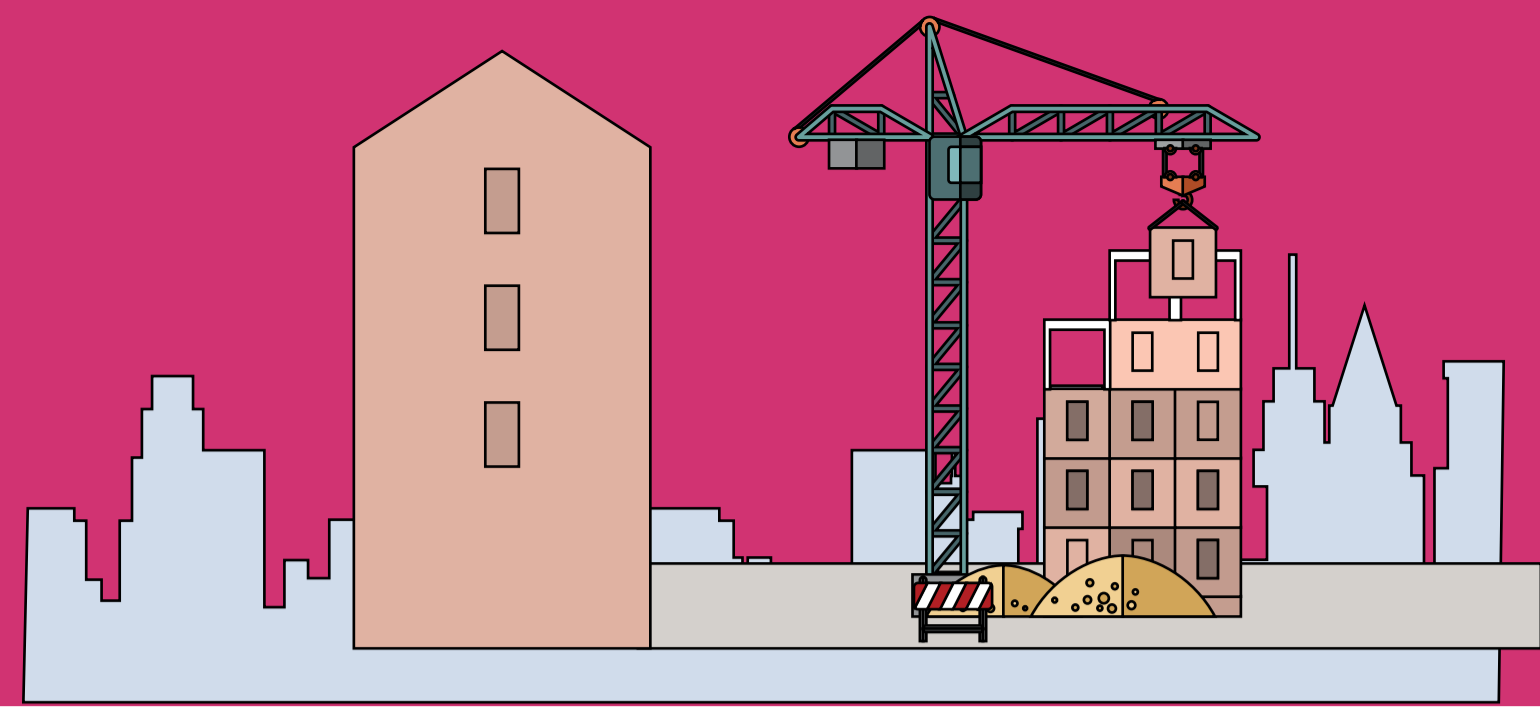
Engagement event in 2023



Engagement event in 2023



Mapping exercise in 2023



Bernard Shaw Foster Court Estate

Introducing Archio and BBUK

Archio



Archio are architects who create buildings, places and strategies for local authorities, housing associations and community groups. We specialise in designing affordable housing on publicly-owned infill sites. We believe that regeneration is most effective when design teams, councils and local communities take a collaborative approach to projects.

Examples of Archio's projects



Community-led housing on an infill site



Shared outdoor spaces and gardens



Housing-led estate regeneration



Retrofit of existing housing



Infill housing and play streets

The architecture team at Archio

The landscape architecture team at BBUK



Mellis Haward
Director



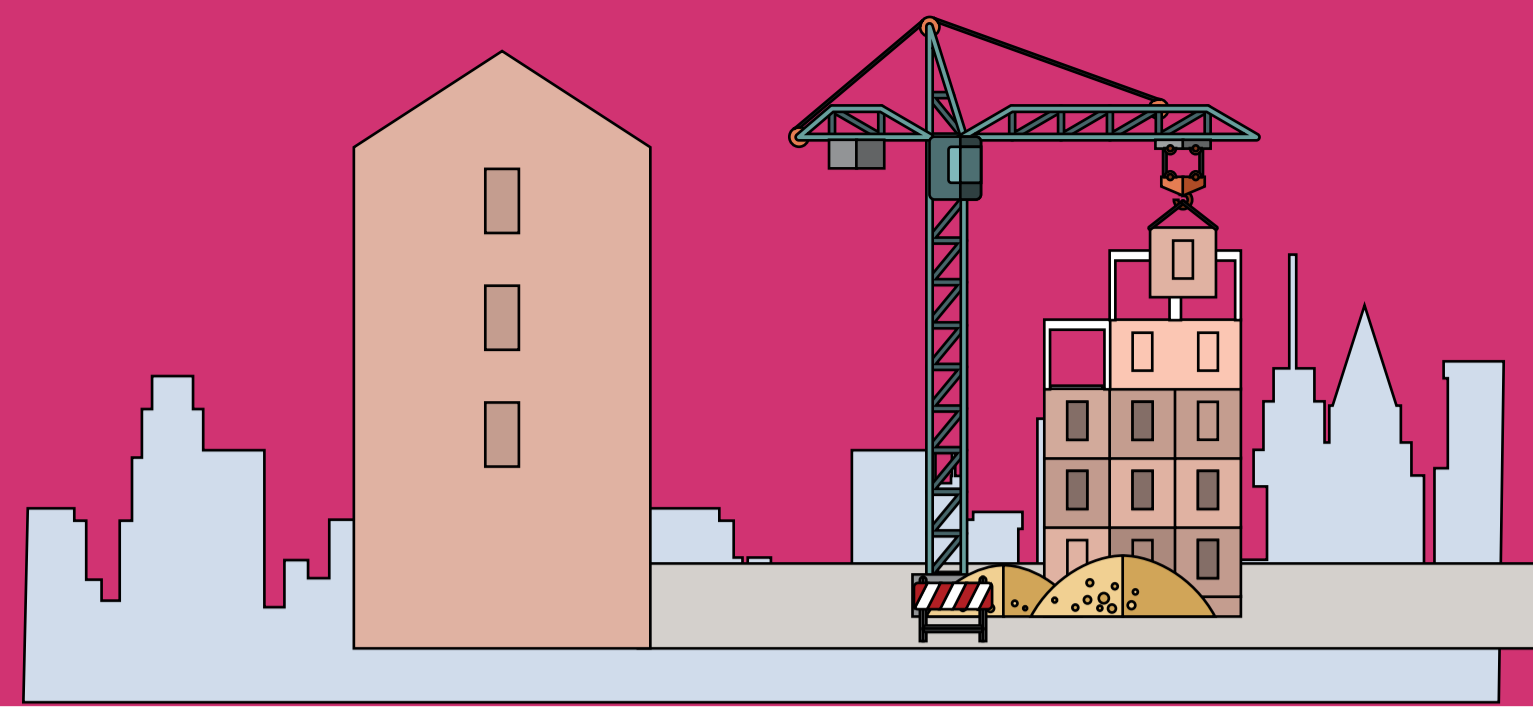
Emma Bennett
Senior Architect



Harriet Bourne
Director



Michele Beraldo
Senior Landscape Architect



Bernard Shaw Foster Court Estate

Archio's experience

Citizen's House, Lewisham



Client: London Community Land Trust
Location: Lewisham

This project created 11 new and affordable homes for the London Community Land Trust (CLT) on a former garage site in Lewisham. Archio were chosen by the local community to develop the project. They began the design process by holding co-design workshops with them on the garage sites.

Archio designed homes with large balconies and natural light, and worked hard to overcome difficult access, work around utilities in the ground and be mindful of neighbours. There is also a large public space in front of the building where people can sit, chat and play.

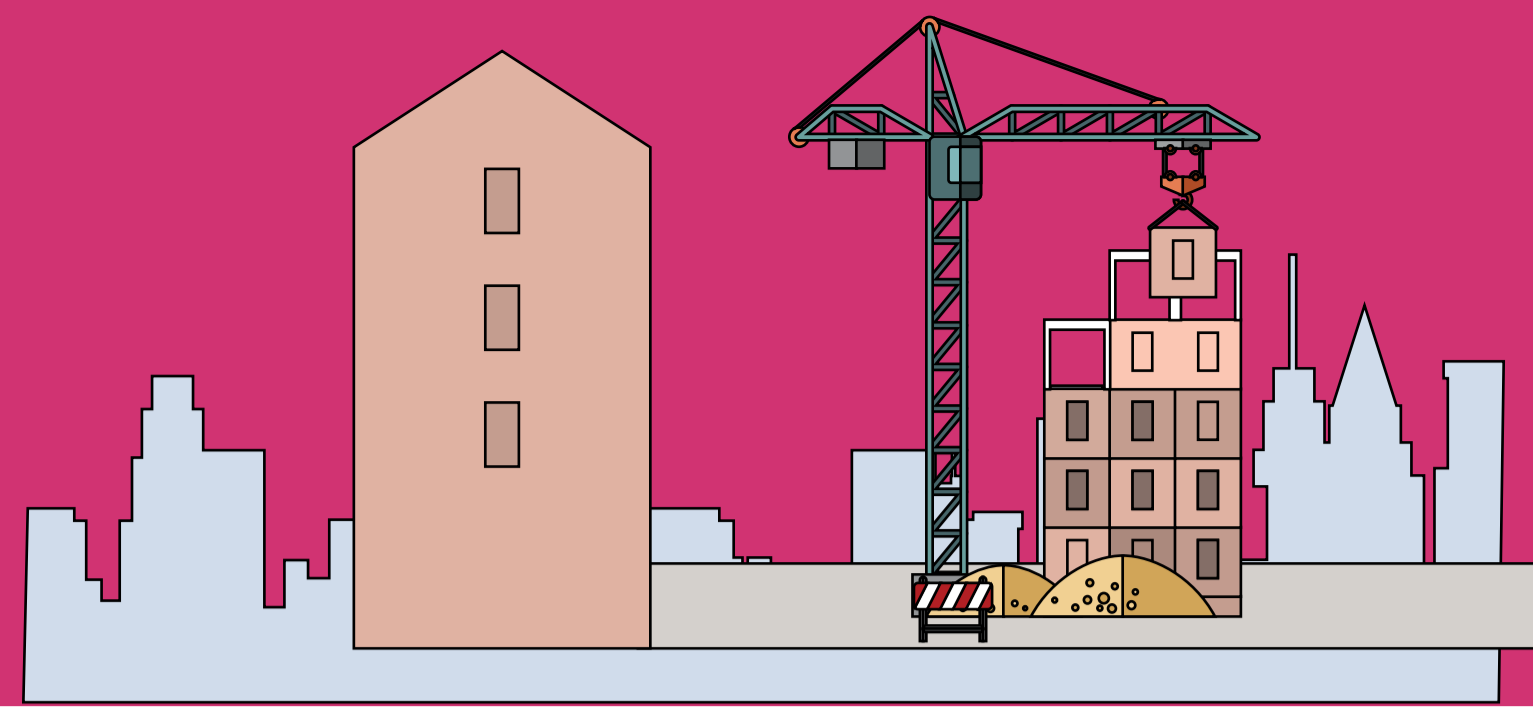
Felixstowe Road and Susan Road, Greenwich



Client: Greenwich Citizens Housing and London Community Land Trust
Location: Greenwich

Developed in close collaboration with local residents, these are two infill projects that provide affordable new homes for the local community: 9 homes at Felixstowe Road and 7 homes at Susan Road.

The new homes consist of low-rise infill housing schemes which carefully respond to their immediate neighbours. They are designed to low energy standards which make the homes cheaper to run and more comfortable to live in.



Bernard Shaw Foster Court Estate

BBUK's experience

Croydon Infill Sites



Client: Brick by Brick
Location: Croydon

BBUK designed the landscape surrounding new housing on three existing estates in Croydon.

Heathfield Road created new communal gardens to benefit both the existing and new residents on the estate. Drummond Street provided public realm improvements on a very tight urban site. At Faithful Court, all existing boundary trees were protected and new private and communal spaces were designed next to the new homes.

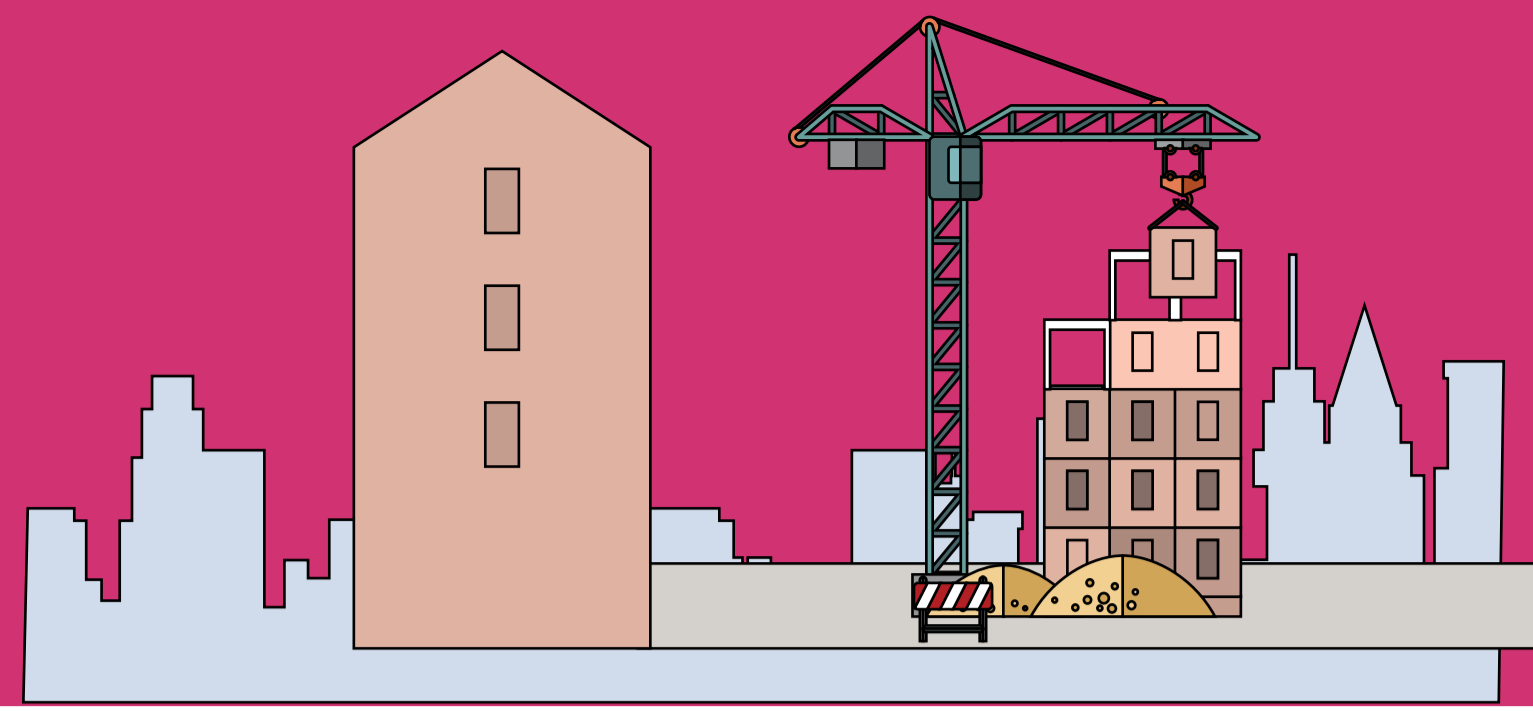
Wimbourne and Buckland Steet



Client: Hackney Council
Location: Hackney

BBUK worked with Mikhail Riches to develop two infill sites for Hackney Council. The designs create new homes and outdoor spaces on the former garage sites.

The design team worked closely with local residents to develop landscaping proposals that would benefit existing residents including play areas and gardens designed to collect rain water.



Bernard Shaw Foster Court Estate

The design process

Working with you

As designs develop, we will work with you through resident workshops and drop-in sessions.



Workshops



These will be targeted at residents on the estate to gather feedback from those living closest to the proposals and understand priorities for landscaping and public realm improvements. We will have lots of ways for you to share feedback, including interactive displays and activities.



Drop-in sessions



These will be targeted at residents and neighbours in the local area, and give people in the wider community an opportunity to share their feedback on the proposed designs.

Stages of design

1. Understanding the brief



Meeting the local community and introducing our team (today)



Understanding residents' hopes and concerns



Figuring out which ideas will be practical for the site

2. Concept design



Sharing early ideas for the site with residents (first workshop and drop-in)



Testing concepts against information from site surveys and feedback from planners



Updating concept designs to respond to feedback

3. Developed design



Sharing developed designs with residents (second workshop and drop-in)

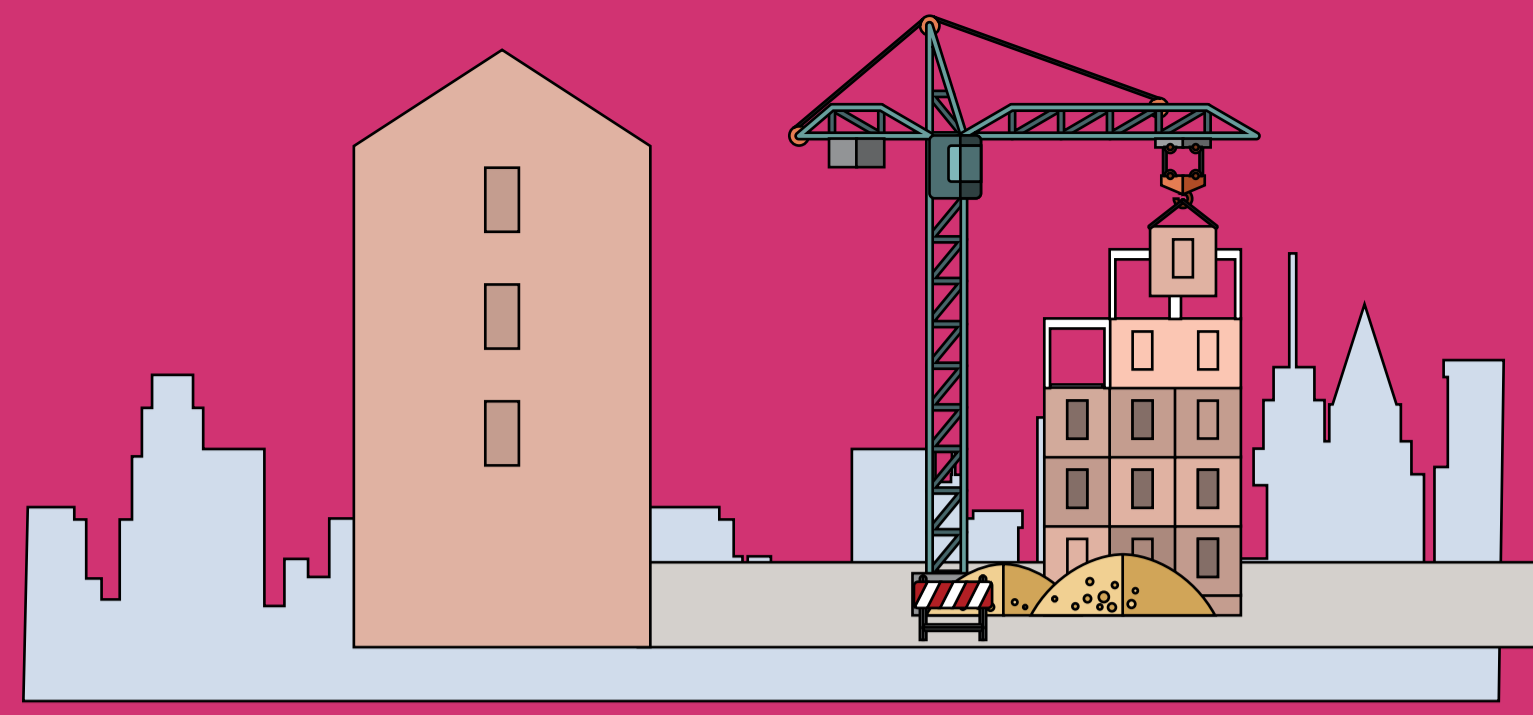


Making final changes with feedback from surveys, planners, and residents



Sharing a final design with the community (final drop-in)

Planning submission

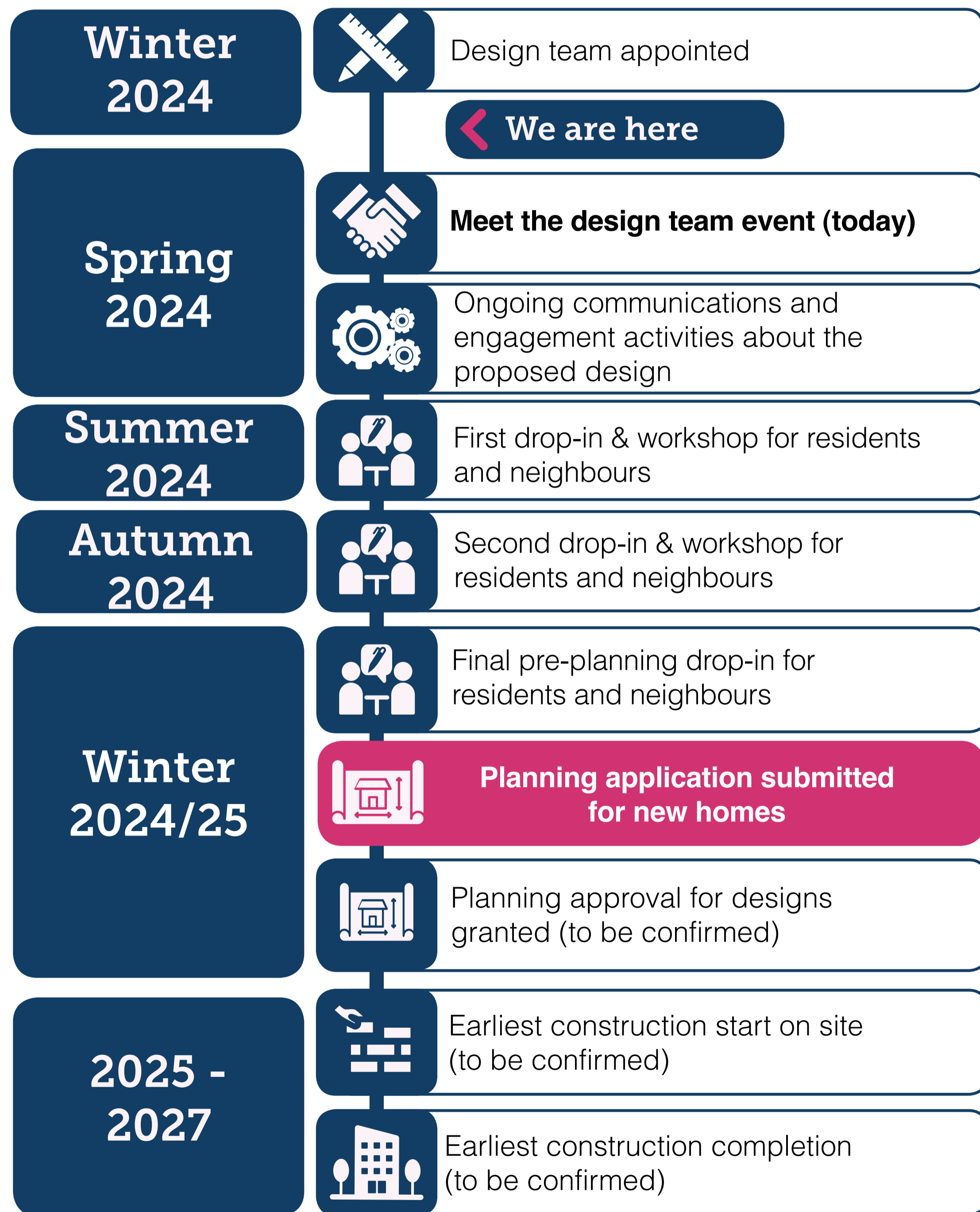


Bernard Shaw Foster Court Estate

Next steps & have your say



Design proposals timeline*



Have your say

Thank you for coming to our drop-in session. You can have your say on our early proposals by:



Feedback forms:

Filling out a feedback form at our drop-in session today



Emailing us at:

NewHomesSmallSites@camden.gov.uk



Calling us on:

020 7974 8792



Visiting our website:

camdensmallsites-bsfc.co.uk



Writing to us at:

Bernard Shaw Foster Court Estate Proposals,
c/o Annalee Jones, Level 4,
5 Pancras Square, London N1C 4AG

Next steps



Workshops



These will be targeted at residents on the estate to gather feedback from those living closest to the proposals.



Drop-in sessions



These will be targeted at residents and groups in the wider community to gather feedback from people in the local area.

*Indicative timeline may be subject to change.

Tell us your priorities about the following themes:

Landscape and playspaces

We want to get your ideas for external spaces next to new homes and potential improvements to existing spaces around the estate. What do you think of:

- Improvements to existing open spaces
- Safety and security around the estate, including lighting and overlooking
- Retaining existing trees and other planting
- Connections to other landscapes on and around the estate
- The existing play area

Access and movement

The location of new homes could change how you move through the estate. We want to know what you think about:

- Making the estate safer and more secure
- Improving existing routes in and out of the estate

Tell us your thoughts here



Tell us your priorities about the following themes:

Facilities

New homes will require waste and recycling facilities and it might be possible to improve existing facilities on the estate. We want to know your thoughts on:

- How the current garages are used
- New secured bike storage
- Improvements to storage spaces, refuse, recycling and bulk waste stores

Architectural character and urban design

Formal policies and standards set the minimum sizes of homes, rooms and distances between buildings. There are lots of different architectural styles in the local area. We want to know your thoughts:

- What buildings and places do you like?
- Which buildings and places do you feel detract from the local area's character?

Tell us your thoughts here

